



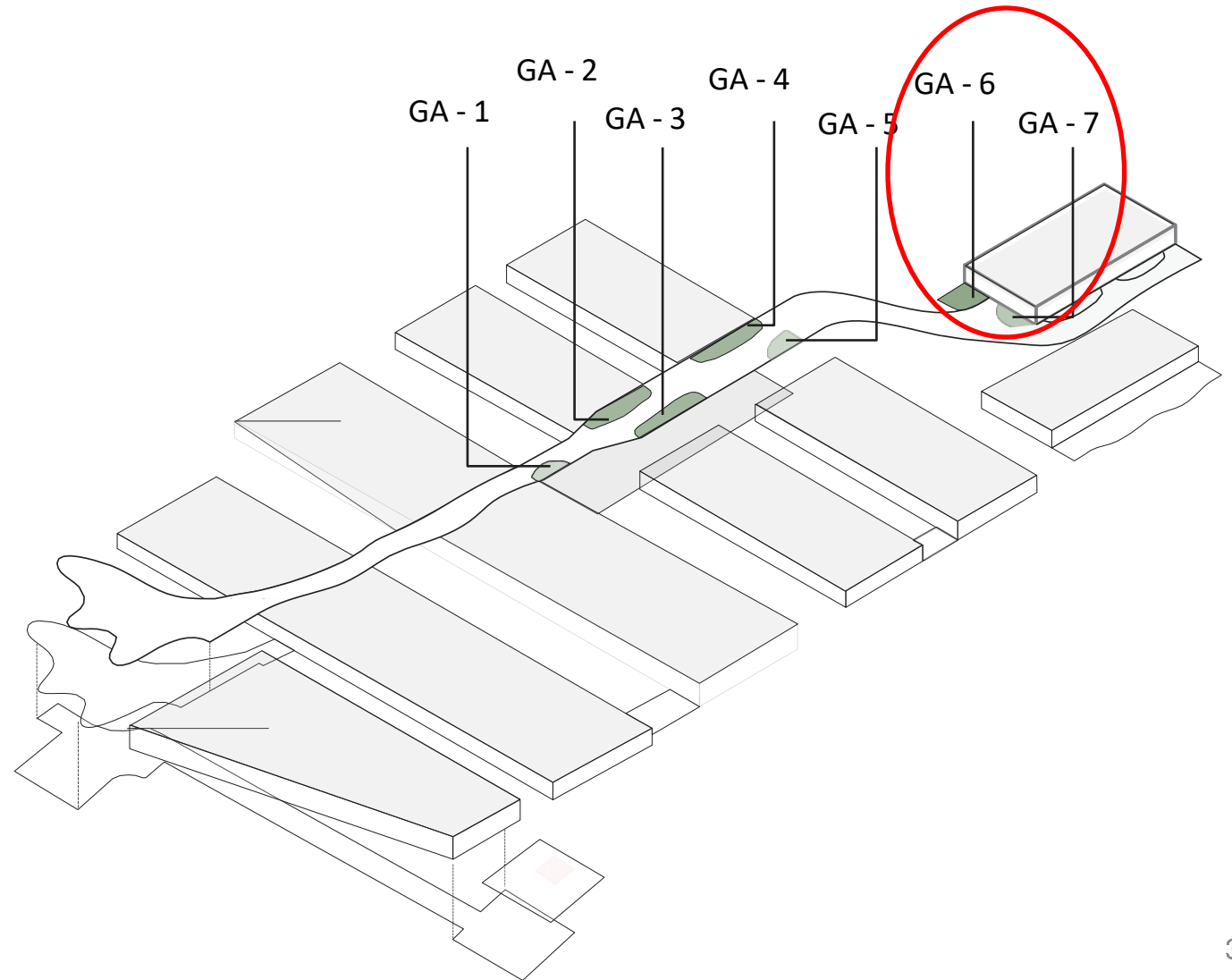
# MWC26 – BEAT BARCELONA

Specs & conditions  
Upperwalkway Garden 6

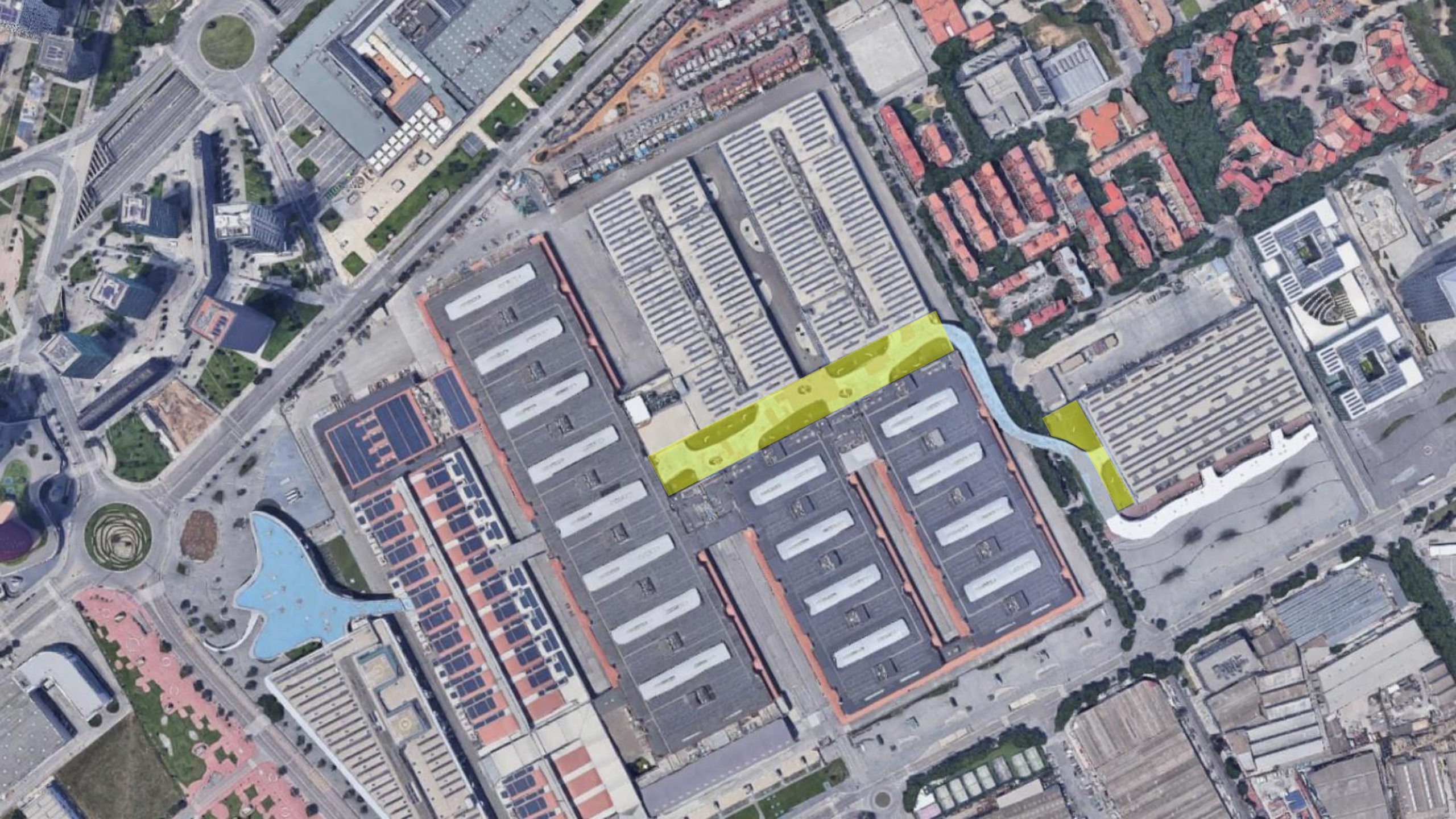
# Introduction

Outdoor Gardens are outdoor **premium spaces** located in the Upper Walkway at Fira Gran Via

Outdoor Gardens can be sold as space only areas (including power supply)









# Uses

## Normal use of Gardens

Green areas were designed as evacuation routes from the central axis to other safe areas. This is why doors open outdoors, towards a safe exit.

Fira Barcelona Evacuation Routes and Protocols restrict the use of green areas to a non-exhibiting spaces, so they remain safe locations for visitors in case of emergency.

## Exceptional use of Gardens

When offering these outdoor locations as catering and / or smoking areas, specific measures are taken. Crowd control guards give a special attention to distribution of people in order to guarantee a correct evacuation in case of emergency.

When a client wants to use these green areas as exhibition, especial measures has to be taken in to consideration when changing the nature of the space from evacuation area to other type.

# Conditions

These spaces are under the same rules & regulations established in the MWC OEM (Online Event Manual). These spaces are classed as complex as they are outdoor spaces. <https://gsma.force.com/mwcoem/s/Home>

Further conditions apply:

The stand/floorplan approval will still need to follow the process established in the OEM but Fira will be involved and informed during the design process and will have the final saying in the approval.

## Timings:

Any project at these spaces have to be built and dismantled according to the official timetable and have to remain in place for the whole duration of the event.

Any exhibitors' activities at these terraces can only take place during the show days and not earlier that 08:00 and nor later that 7:00 pm.

## Catering:

If required, is to be supplied by GastroFira. No external caterers are allowed.

Depending on the services the client might request, storages, power, water or other means will need to be provided within the garden at the exhibitor expense.

## Damages:

The gardens are open-outdoor space and therefore Fira Barcelona will not take any responsibility if any damage are caused or any activity is cancelled due to bad weather conditions.

Any potential damages caused by the exhibitor or their guests to the walls, installations or other infrastructures of Fira de Barcelona will be charged to the exhibitor. Fira will determine the suppliers to fix the damage and present the costs to the client.

# Conditions

## Capacity and crowd control:

As any space a maximum capacity will be established but in these spaces it will be mandatory to be monitored. Capacities are limited in these areas due to nature and will be affected by the design each supplier might want to implement. No capacity can be considered as definite until the design is not final, so expect these to fluctuate during the process. Capacity calculation will be done by Fira and the appointed technical architects (Graó Tècnic). The monitorization of these capacities will be done via the designated system established by Fira. Fira will control this system and establish a protocol in case capacities are reached. The exhibitor will be involved and part of the notification process. Access control guards are mandatory to control the access and set protocols in motion when necessary. Fira will establish the minimum necessary. Cost of control access guards during the entire event will be at the exhibitor's expense.

An **evacuation route** needs to be implemented in the designs. The path needs to be as straight as possible but Fira will work with the exhibitor to integrate it into the designs as much as possible. The minimum width of the aisle is 2m.

## Build restrictions & limitations

Nothing can be attached, fixed, placed or drilled into any of the surfaces.  
Graphics are available but need to be ordered via Fira.  
Structures must be self-supporting.  
Floor load resistance 500kg/sqm.  
Doors cannot be blocked at any time.  
The green areas floor is artificial grass; to protect and make sure that it is put in place again after dismantling, the floor has to be covered with plastic, rubber band or a similar material before building, setting up your structure and dismantling.  
The upper walkway floor must also be protected at all moments. The protective carpet line must be used while moving goods through the venue. The materials stored on the walkway must have a protective surface such as carpet, cardboard or rubber and cannot exceed 500kg/sqm weight. Also, these materials must be placed away from the carpet line.

# Conditions

## Build restrictions & limitations

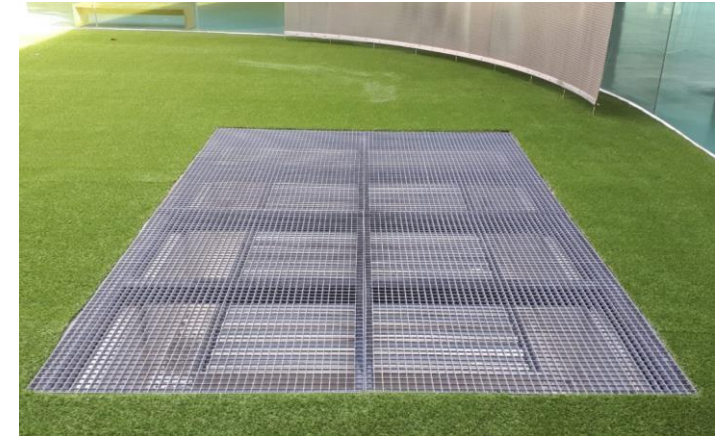
Nothing can be placed over the smoke exhaust ventilator at any moment.

Cabling can not be run through the drainage grate. This drainage grate can not be covered either.

It is not allowed to transport material with carts or other devices with wheels in the green area. If an exception is required and approved by Fira, adequate protective covering (carpet, rubber band, or similar) must be placed beforehand and the transport can only be moved in a straight line, no turns are permitted, to prevent damages to the grass.

**Space handover** : client will need to do a handover process with Fira before build and after dismantle in order to revise the space and its conditions.

smoke exhaust ventilator



Drainage grate





# MANDATORY Build-up Period



## Site safety starts here

BEAR IN MIND THAT THIS IS A BUILD UP AREA  
RULES OF THE EVENT MANUAL ARE APPLICABLE

 NO SMOKING	 FOOD IS NOT ALLOWED
 HIGH VISIBILITY JACKET MUST BE WORN	 DOORS MUST BE KEPT CLEAR AT ALL TIMES
 HARD HATS MUST BE WORN UNDER OVERHEAD WORKING AREAS	 BEWARE! SLIP AND TRIP HAZARDS
 MACHINE GUARDS MUST BE USED	 SMOKE EXHAUSTION GRID MUST REMAIN UNCOVERED AT ALL TIMES
 SAFETY SHOES MUST BE WORN	 DANGER OVERHEAD WORKING
 ANY STRUCTURE MUST SIT ON RUBBER TO PROTECT THE ARTIFICIAL GRASS	 ARTIFICIAL GRASS MUST BE COVERED DURING BUILD UP WORKS
 NEITHER PALETTE JACKS NOR DUTY CARTS ARE ALLOWED	 NO DRILLING TO THE FLOOR IS ALLOWED

Consider that gardens are build up areas.

All the event manual restrictions are applicable during build up period.

It is mandatory to put signage informing about all these rules that must be followed.



# Mandatory services with Fira

- **Power switchboxes & water**

Client can sort their own electrician to make the power distribution from the boxes onwards)

- **IT (cabled and WiFi connectivity) & frequency management**

- **Cleaning & waste**

- **Security**

As it is linked with the mandatory crowd control the security team needs to be from Fira.

- **Crowd control system**

Fira will share data live with the client but protocols and necessary actions during show will be dictated by Fira.

- **Graphics**

Anything that is to be attached or fix to any of the venue surfaces is to be provided by Fira

- **H&S and certificates**

- **Catering**

## Optional services

- **Furniture**

- **AV**

- **Free standing graphics or anything attach to the ephemeral build**

- **Floral and greenery**

- **Hostesses**

- **Stand and features design & Build.**

# Capacities

The below capacities are examples of the capacities of each garden in the project of 2020 as to give an idea of the what the numbers can be. Nevertheless these are in no case a guaranteed and the capacities are heavily influence by the use and build of the space, so until a design is not final, the capacity of the space can fluctuate.

GARDEN	SQM	DOORS	MAXIMUM CAPACITY
GA1	362	2	216
GA2	875	2	453
GA3	910	2	463
GA4	754	2	332
GA5	382	1	99
GA6	1056	2	508
GA7	563	2	255

Capacity depends on the complexity of the deployment, amount of furniture added to the area and its use.

The capacity figure shown is a reference and may vary after technical review of the proposed layout and use of the space.

# Main contacts @Fira

These spaces are sensitive not only due to its nature as evacuation areas, but because their characteristics. As such special processes need to be established so the conditions of the space is preserved whilst the exhibitor can take as much advantage as possible. Consequently:

A **Fira Operations Project manager** will be assigned with whom the exhibitor will need to involve throughout the design process. The Fira Ops PM will ensure that conditions are being complied but as well help the exhibitor maximize the use of this area.

Assistance in logistical and operational matters

Assistance to the exhibitor and ServiFira/GastroFira with the specifics and particularities certain services may entitle due to the particularities of these spaces

Overview and final step in the stand/floorplan approval process Abraxys and Graó Tècnic

Make available the accumulated knowledge of 8 years creating networking spaces in the gardens.



**Nat de Borja** [ndeborja@firabarcelona.com](mailto:ndeborja@firabarcelona.com)



**Pat Rocamora** [procamora@firabarcelona.com](mailto:procamora@firabarcelona.com)

The exhibitor will enter as well in contact with a **Build Up account manager** to deal with the services needed. The Fira AM will be able to provide the mandatory services as well any other service the exhibitor desired to entrust to Fira.

Client might come into contact with other Fira staff or our suppliers to help the process and delivery of the necessary services. At all times the exhibitor will have the Fira Ops PM and the ServiFira AM to help them and solve any queries.



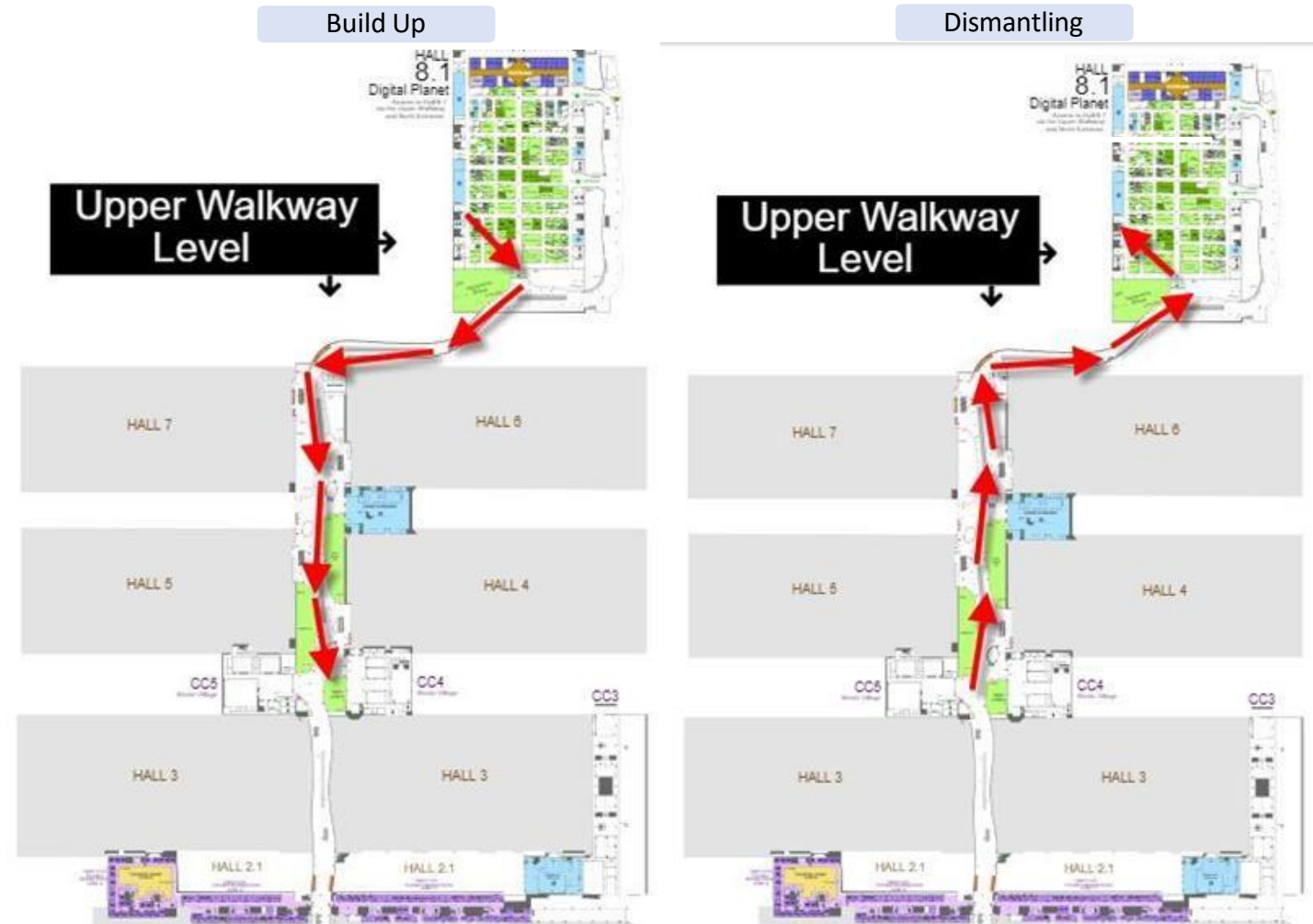
# LOGISTICS - SET UP & DISMANTLING

Access routes to the gardens are the same for Build Up and Dismantling. Gardens from 1 to 7 are located on the Upper Level of the venue. Delivery and pick up of all material should happen via Hall 8.0 loading bay.

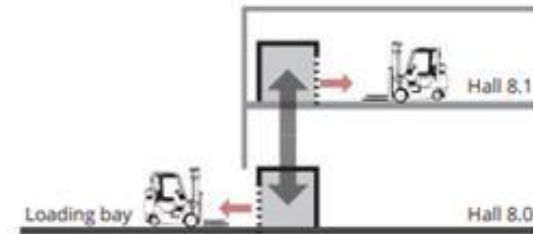
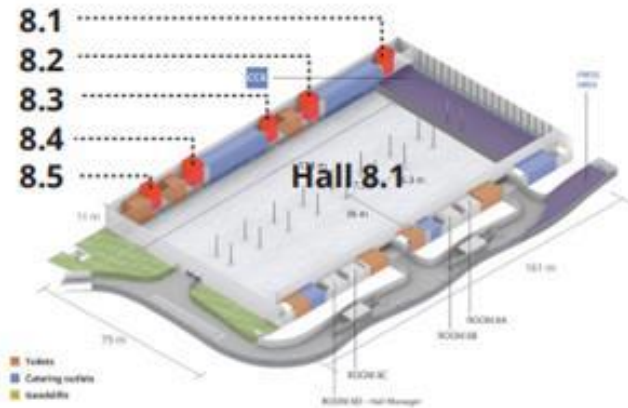
The access to Hall 8.0 is through Calle Alumini, Gate 5. Once you are in Hall 8.0 you need to take the freight elevator to the Upper Level (8.1) and from there walk via the Upper Walkway to each green area.

It is not allowed to carry any material through the travellers along the upper walkway.

It is not allowed to circulate through the Upper walkway with heavy elements, such as heavily loaded pallet trucks and carts so as not to damage the ground. A carpet path will be laid so materials are moved along this path. Only rubber wheels are to be used.



# Freight Elevators



The lifts have a rear and front door system.  
Loading does not affect logistics inside Hall 8.0



It is totally forbidden to use freight lifts with personnel inside them. These are only to be used for freight without personnel, nor forklifts nor pallet jacks.

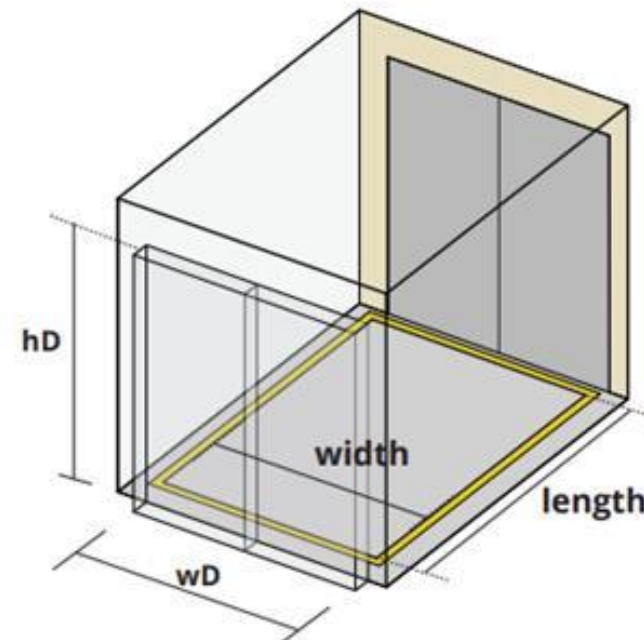
Maximum weight allowed is the freight weight only, according to each freight weight lift limit indicated before. (6 or 4 tonnes).

Yellow lines drawn in the freight lift floors must not be crossed by the freight, otherwise doors can't close.

Please make sure that the freight inside the freight lift is fixed on the floor so that it doesn't crash with the building walls when the freight lift moves.

Finally, please make sure you follow the instructions of the freight lift operators.

Lift	Max weight kg	Dimensions lift mm (width X length)	Dimensions door mm (wD X hD)
8.1	4000	2500 X 3600	2650 X 2100
8.2	6000	2500 X 5400	2650 X 2700
8.3	4000	2500 X 3600	2700 X 2300
8.4	6000	2500 X 5400	2650 X 2700
8.5	6000	2500 X 5400	2650 X 2700



# MANDATORY Signage



Even though Gardens are exterior zones, it is forbidden to smoke any type of cigarette.



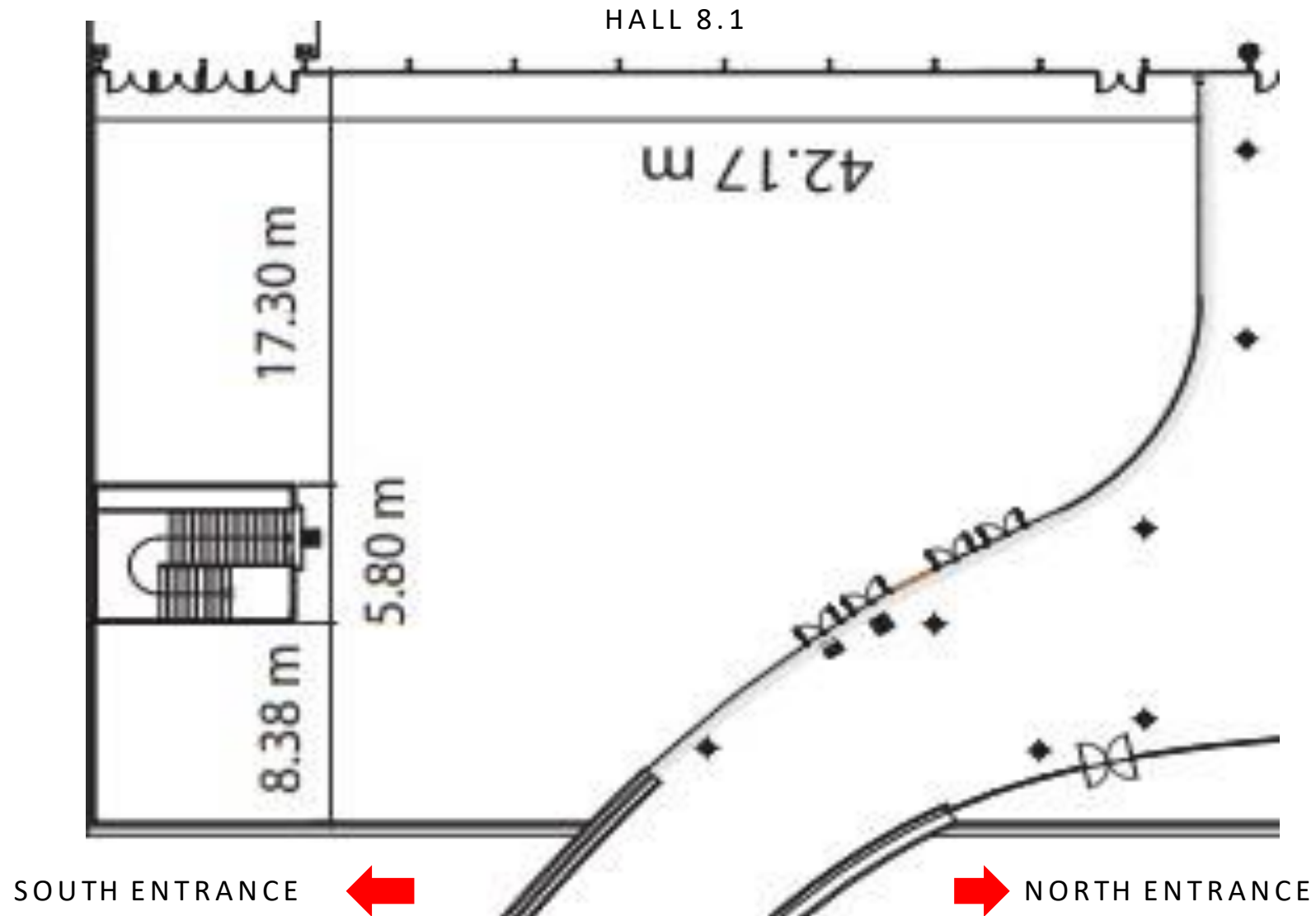


**Fira Barcelona**

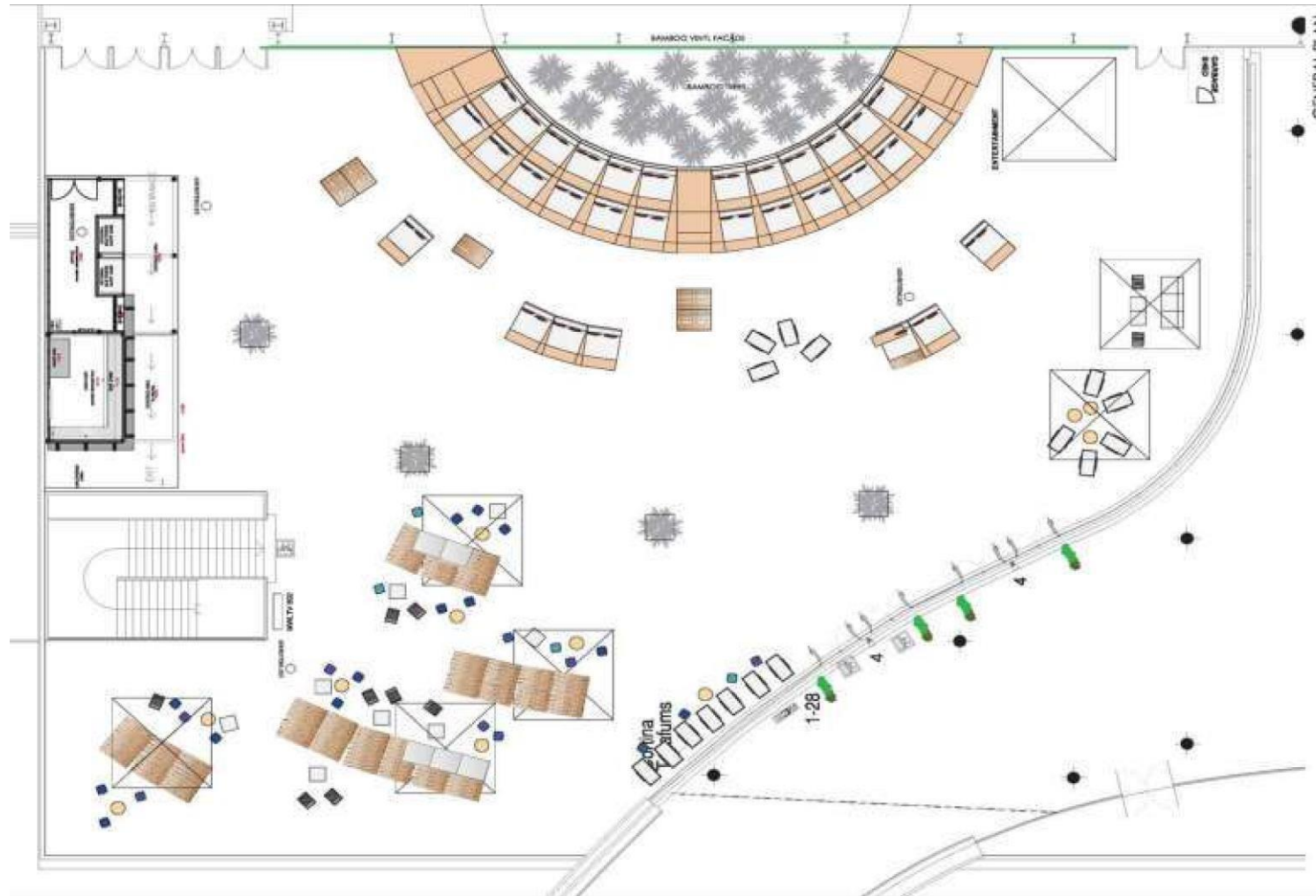
# GA6

# Floorplan

1065  
sqm



# Sample layout



SOUTH ENTRANCE



NORTH ENTRANCE

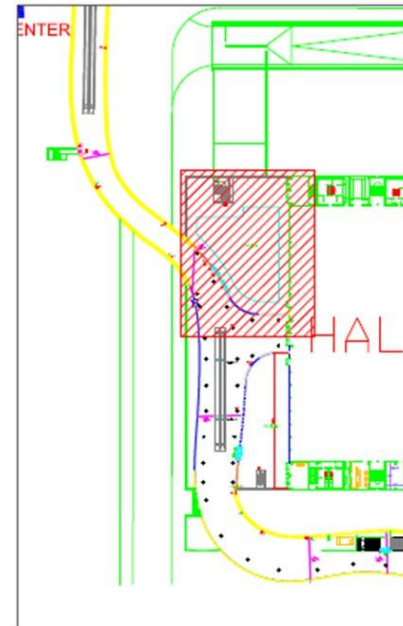
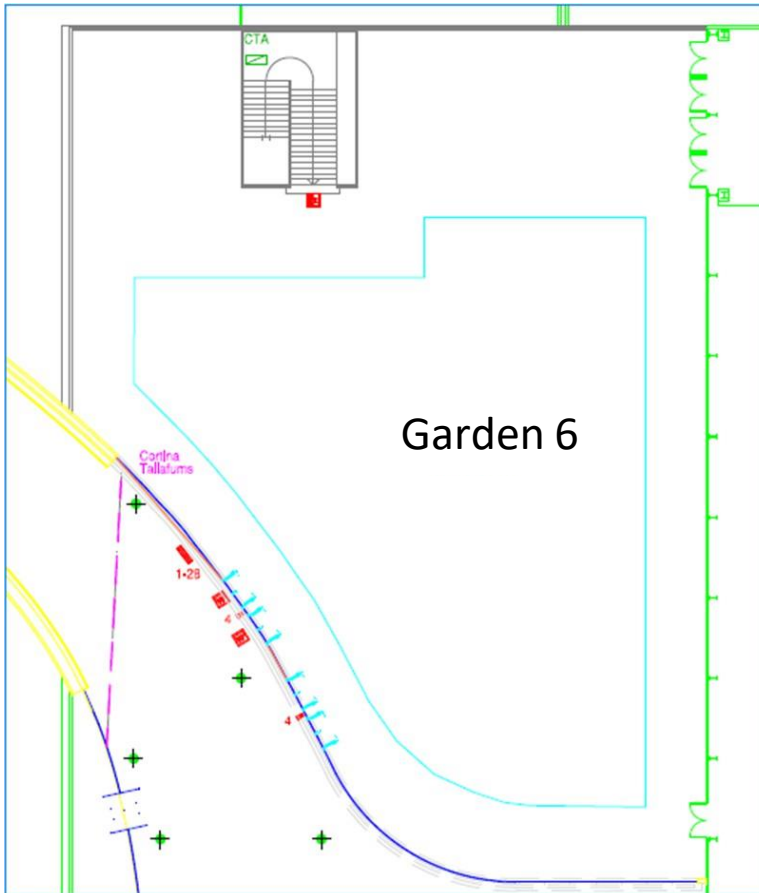
Example of floorplan and layout



# Pictures



# Services available

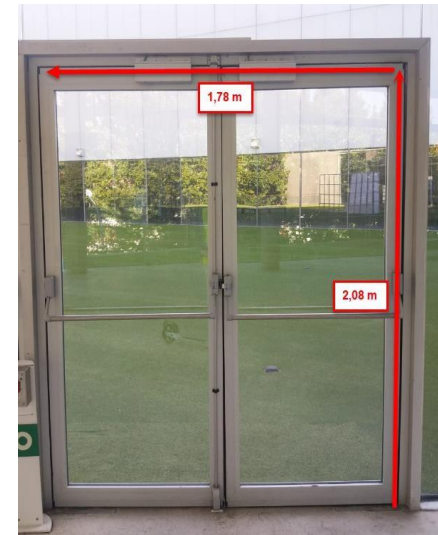


## GA6

- 1 Switchboard distribution panel 160A / 99,77kw
- 1 Water point
- 1 Drainage point (only liquids)
- 4 internet Access point

*\*power switchboards are to be ordered to Fira. Client can sort their own electrician to make the power distribution from the boxes onwards.*

Door Garden 6





# Benches

By default, green areas are furnished with Toyo Ito design benches. These benches can be removed under request and can only be handled by Fira staff.

GA6



Total: 2 rectangular benches + 2 curved benches

