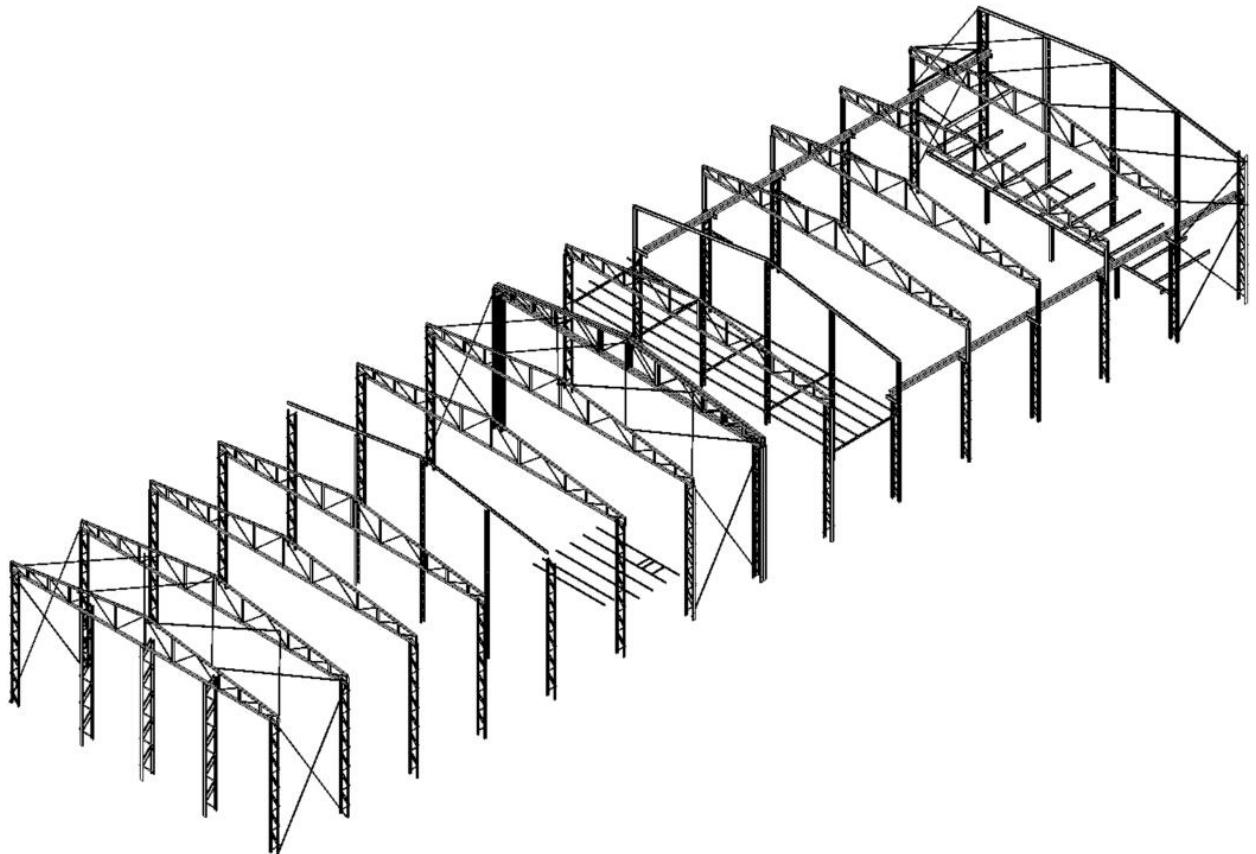
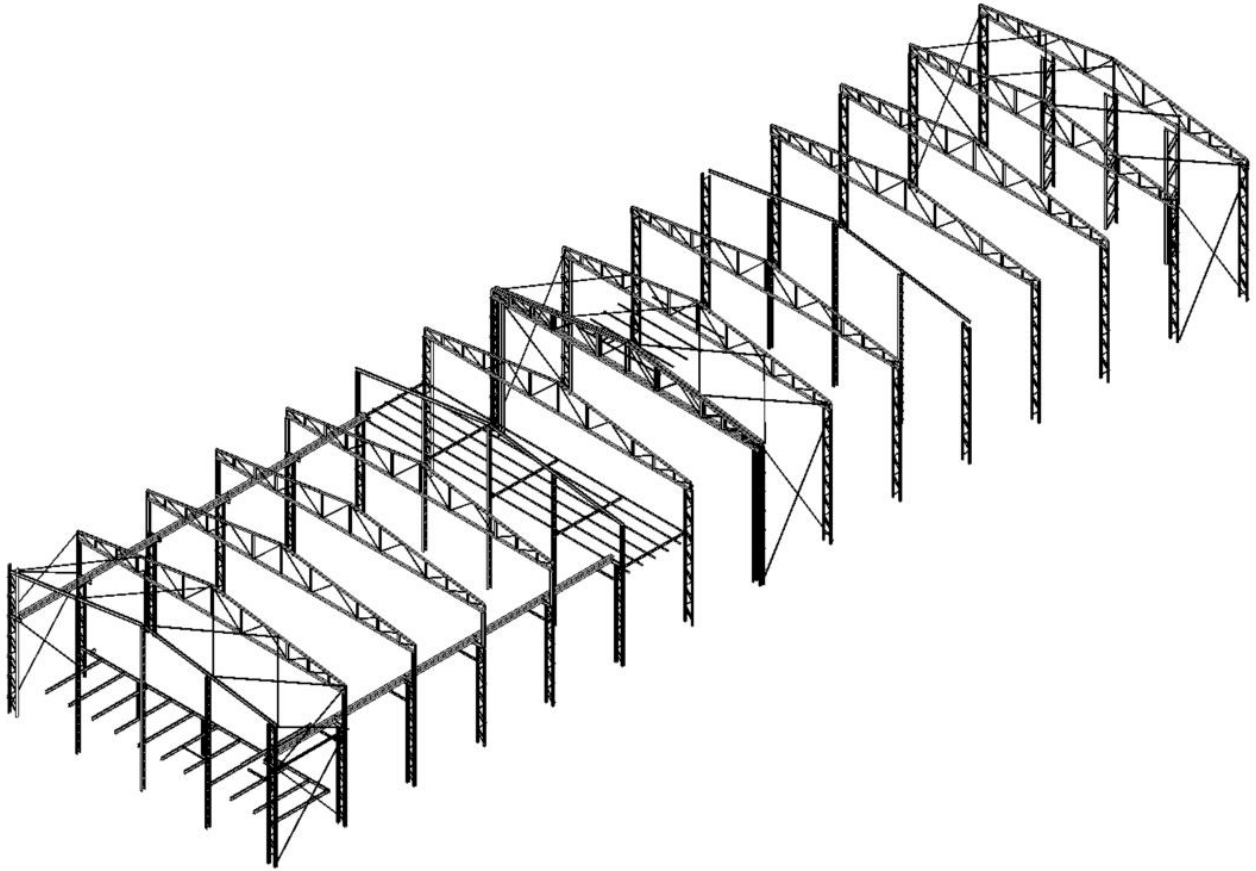


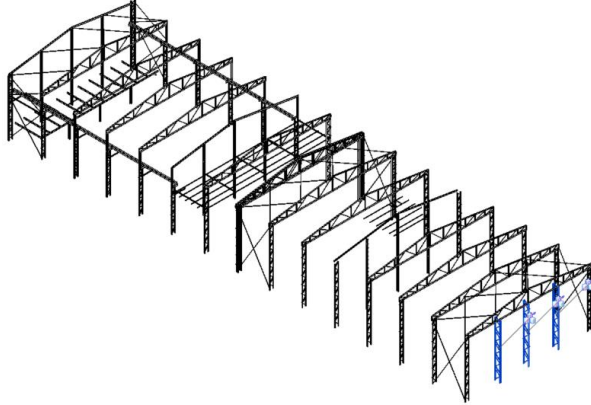
SERVICIO PARA EL MANTENIMIENTO DE LA DOCUMENTACIÓN GRÁFICA BIM AL GRUPO TERSA. EXPEDIENTE CTTE 687



MEDICIONES ESTRUCTURA NAVE COMUN SEMESA

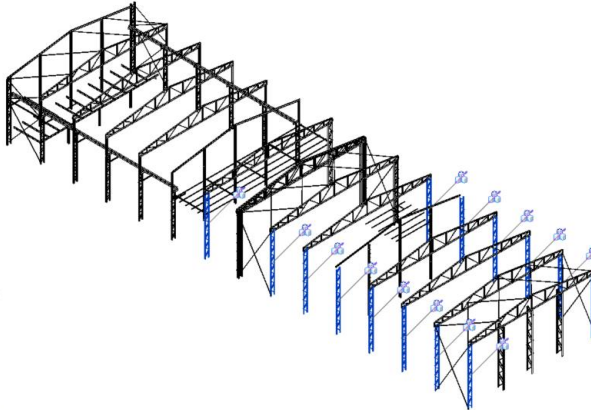
1.1 PILARES

- STR_PilarMetalicCompost_330x1000x10000mm_



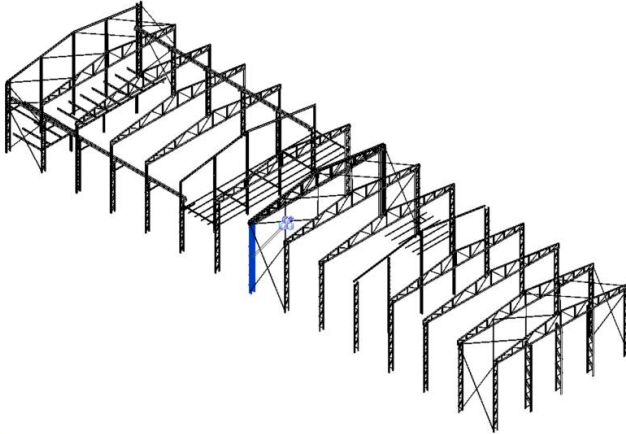
PIL_PilarMetalicCompost_330x1000x10000mm_: 10000x3= **30000mm**

- STR_PilarMetalicCompost_190x720x1090mm_



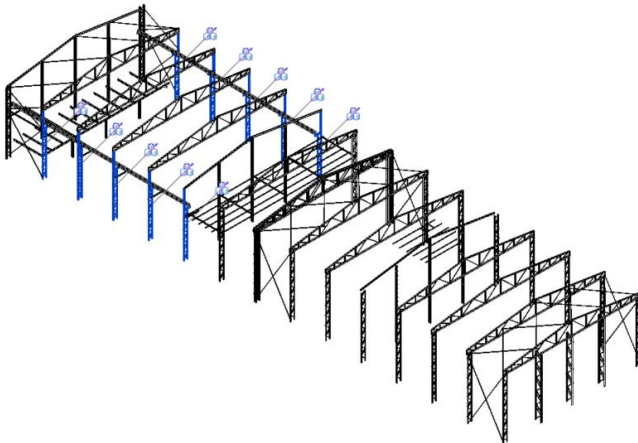
PIL_PilarMetalicCompost_190x720x1090mm_: 1090x14= **15260mm**

- STR_PilarMetalicCompost_210x720x10340mm_



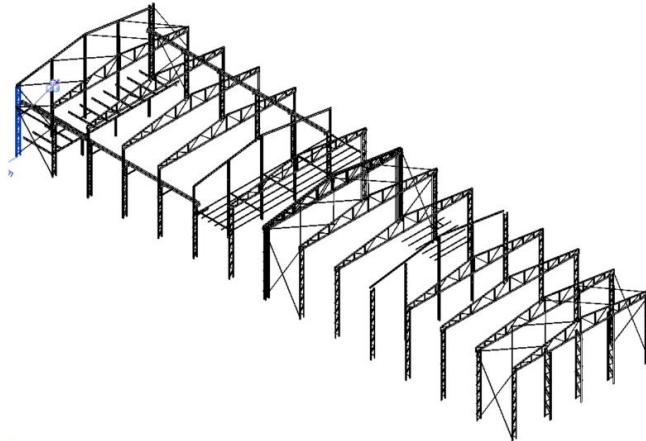
PIL_PilarMetalicCompost_210x720x10340mm_ : 10340x2= **20680mm**

- STR_PilarMetalicCompost_230x720x10490mm_



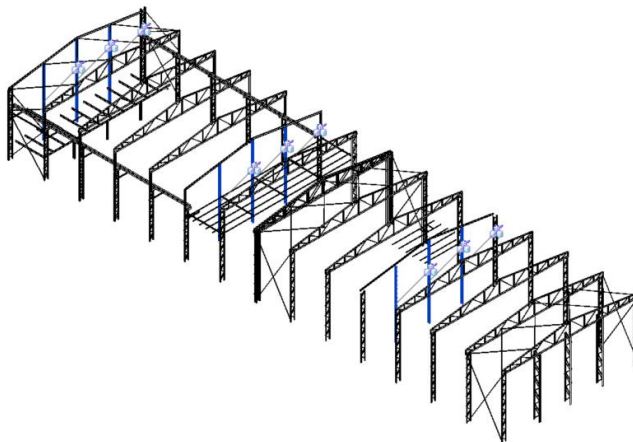
PIL_PilarMetalicCompost_230x720x10490mm_ : 10490x10= **104900mm**

- STR_PilarMetalicCompost_230x720x10400mm_



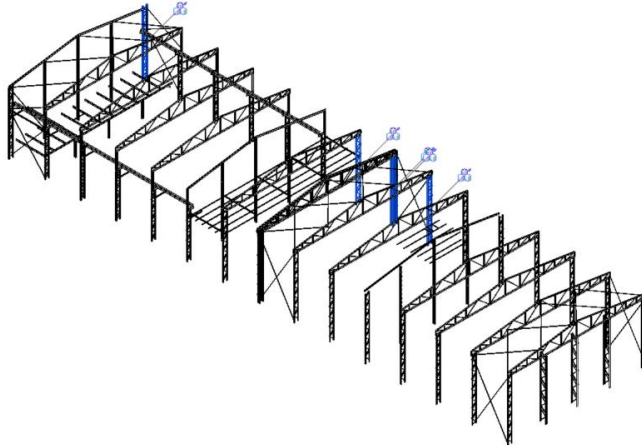
PIL_PilarMetalicCompost_230x720x10400mm_: **10400mm**

- STR_PilarMetalicCompost_150x300x11380mm_



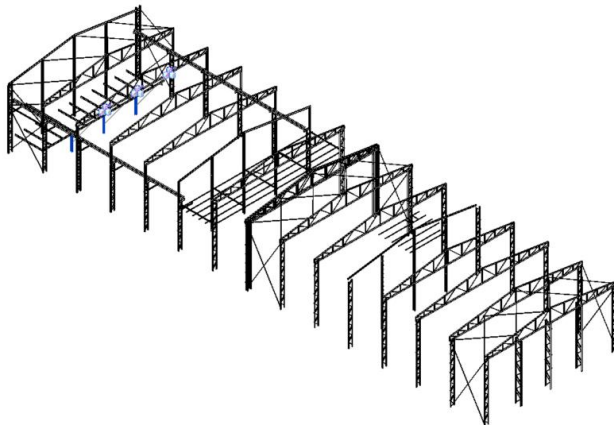
PIL_PilarMetalicCompost_150x300x11380mm_: 11380x9= **102420mm**

- STR_PilarMetalicCompost_3300x750x1090mm_



PIL_PilarMetalicCompost_3300x750x1090mm_: 1090x5= **5450mm**

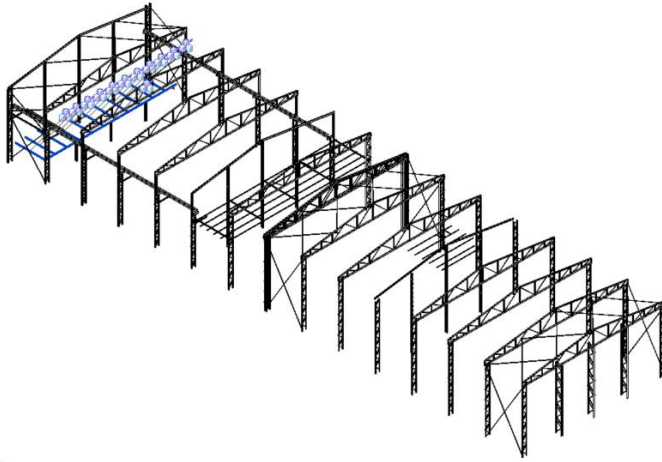
- STR_Pilar_MetalicSimple



PIL_Pilar_MetalicSimple_HE200B: **7.83m**

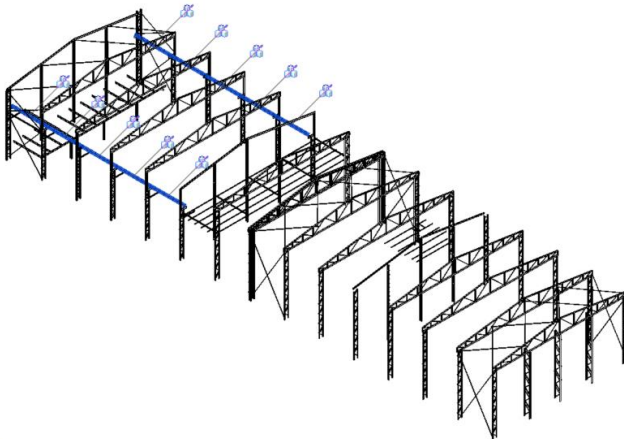
1.2 VIGAS

- STR_Biga_Acer



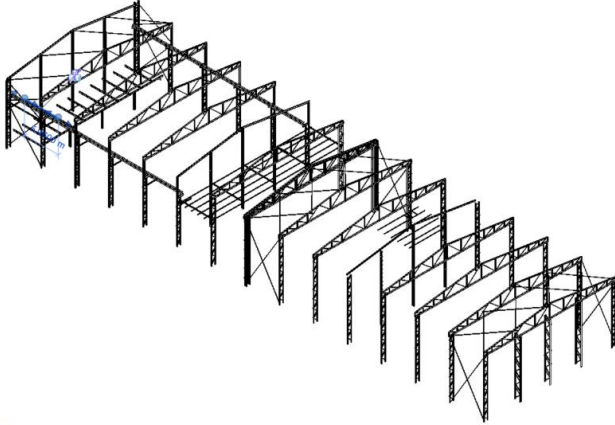
BIG_Biga_Acer_IPE200: **76.62m**

- STR_Biga_Acer-HE



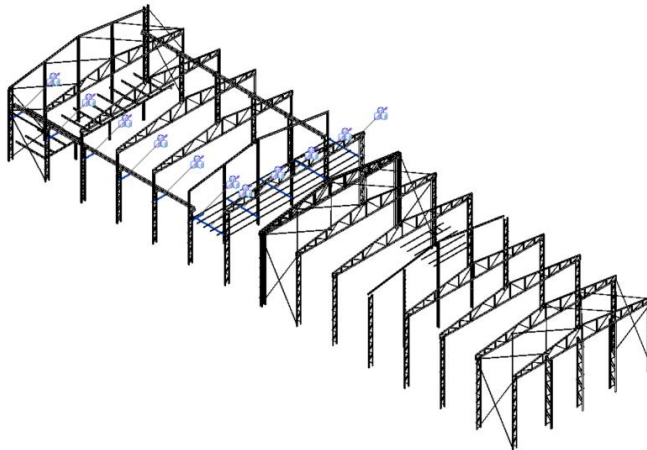
BIG_Biga_Acer-HE_320B: **60.01m**

- STR_Biga_PerfilMetalicCanal_U



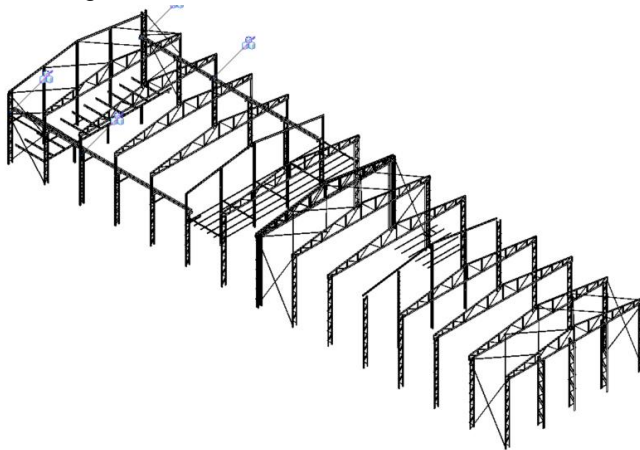
BIG_Biga_PerfilMetalicCanal_U_260x90x10mm: **5.96m**

- STR_Biga_Acer



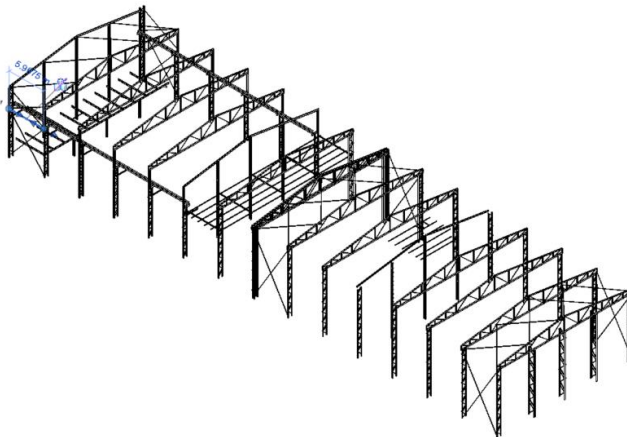
BIG_Biga_Acer_IPE140: **41.74m**

- STR_Biga_



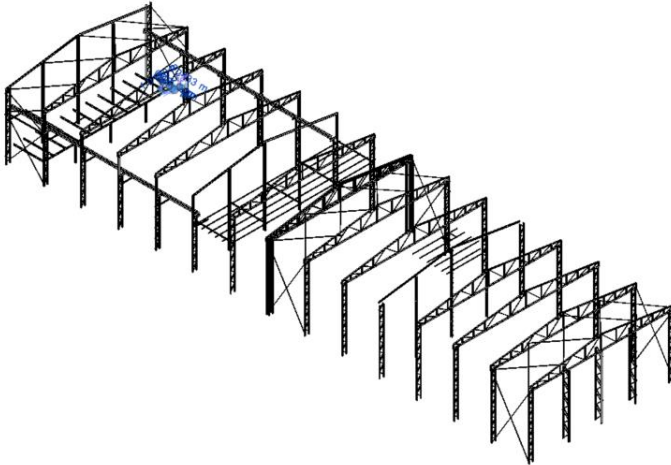
BIG_Biga_Acer_IPE240: **4.24m**

- STR_Biga_PerfilMetalic_U_AlesParaleles



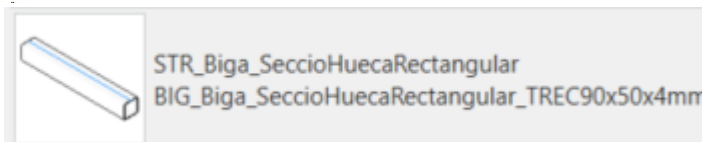
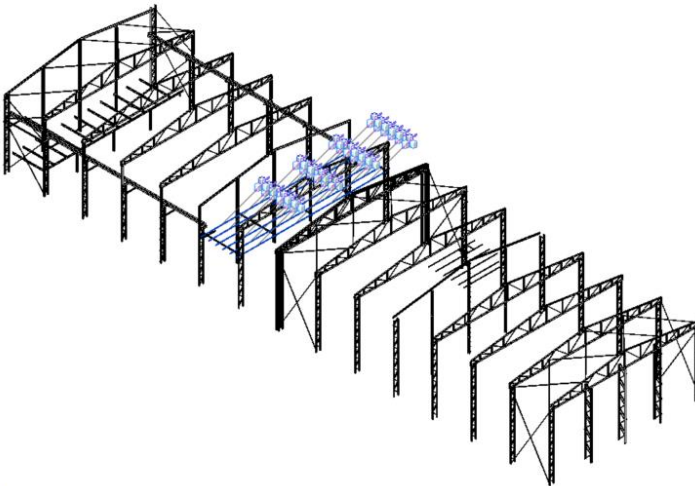
BIG_Biga_PerfilMetalic_U_AlesParaleles_150x75x18mm: **5.97m**

- STR_Biga_PerfilMetalic_U_AlesParaleles



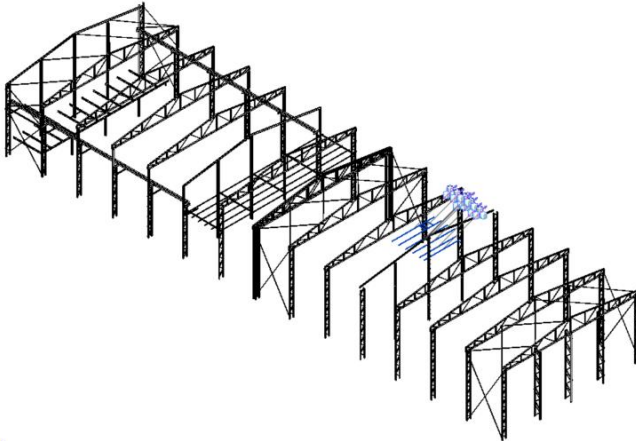
BIG_Biga_PerfilMetalic_U_AlesParaleles_200x90x30mm: **0.43m**

- STR_Biga_SeccioHuecaRectangular



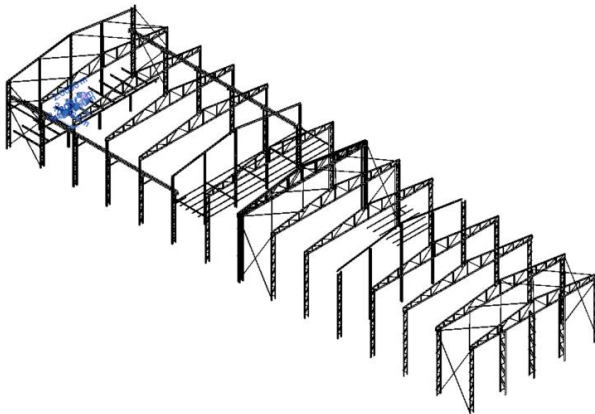
BIG_Biga_SeccioHuecaRectangular_TREC90x50x4mm: **140.15m**

- STR_Biga_Acer



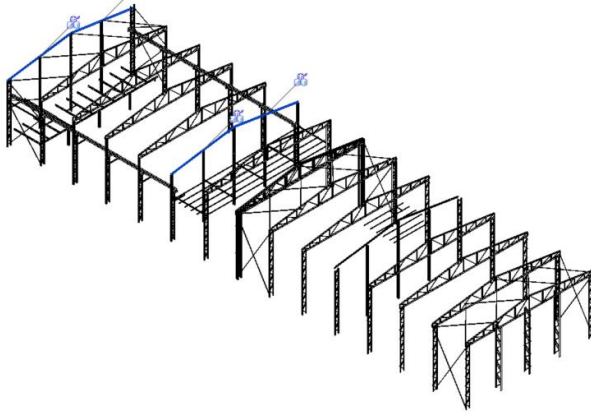
BIG_Biga_Acer_IPE80: 44.41m

- STR0_Biga_BarraT



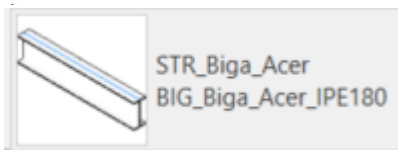
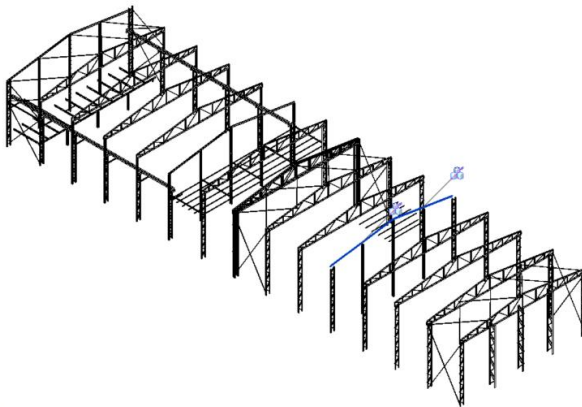
_Biga_BarraT_80x80x9mm: **2.00m**

- STR_Biga_Acer



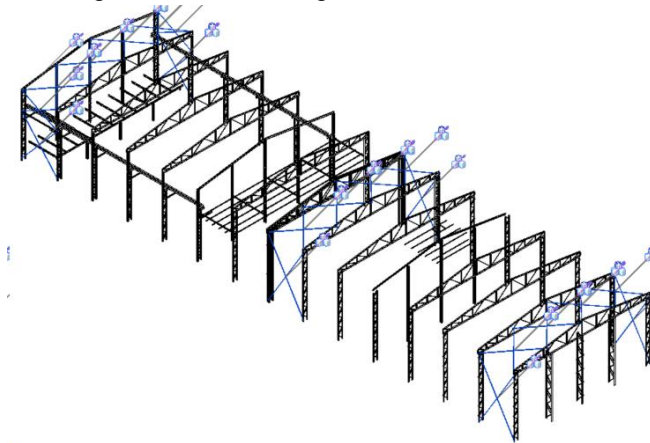
BIG_Biga_Acer_IPE220: **46.98m**

- STR_Biga_Acer



BIG_Biga_Acer_IPE180: **22.83m**

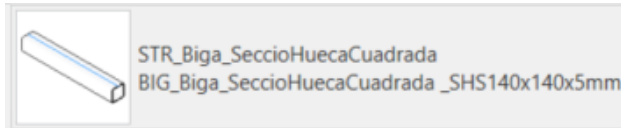
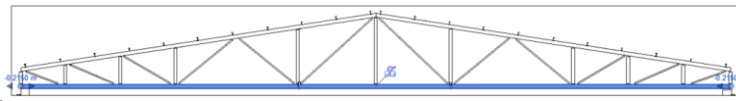
- STR_Biga_PerfilMetalicAngular



BIG_Biga_PerfilMetalicAngular_50x50x3mm: **364.31m**

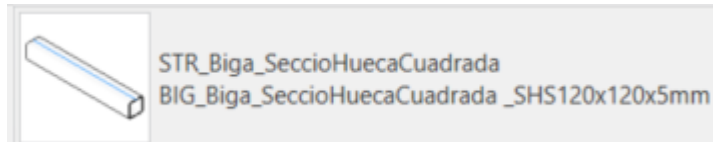
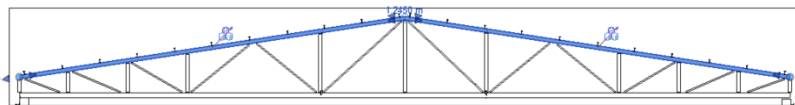
1.3 CERCHAS

- STR_Biga_SeccioHuecaCuadrada _SHS140x140x5mm



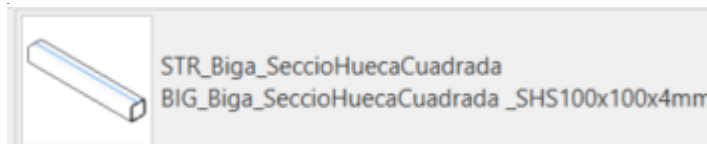
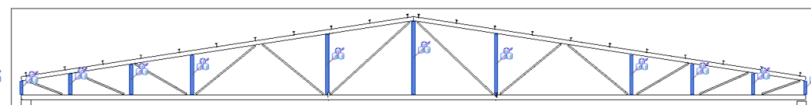
BIG_Biga_SeccioHuecaCuadrada _SHS140x140x5mm: **301.79m**

- STR_Biga_SeccioHuecaCuadrada



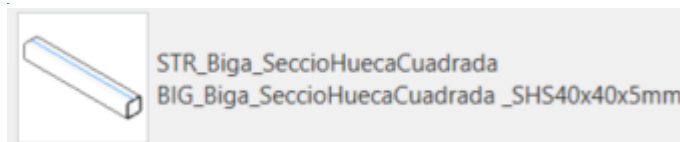
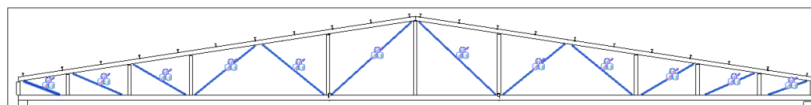
BIG_Biga_SeccioHuecaCuadrada _SHS120x120x5mm: **305.18m**

- STR_Biga_SeccioHuecaCuadrada



BIG_Biga_SeccioHuecaCuadrada _SHS100x100x4mm: **176.24m**

- STR_Biga_SeccioHuecaCuadrada



BIG_Biga_SeccioHuecaCuadrada _SHS40x40x5mm: **369.20m**

La medición es el valor total de todas las cerchas.